

Multifinger Imager Processing System

MIPSPro 2.1

MIPS Product range

MIPSPro: Fully configured interactive processing package for multi-arm mechanical calipers and auxiliary wireline logs.

MIPSVIEW: License free viewer for end user interpretation. Enables delivery of reports in digital and web based formats.

MIPSLite: Field processing package with customized input and basic processing.

MIPS3D: Fully interactive 3D pipe viewer for interpretation. Supplied with the above products.

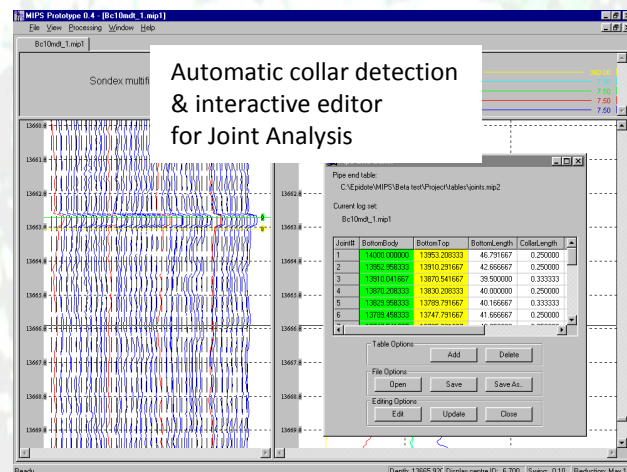
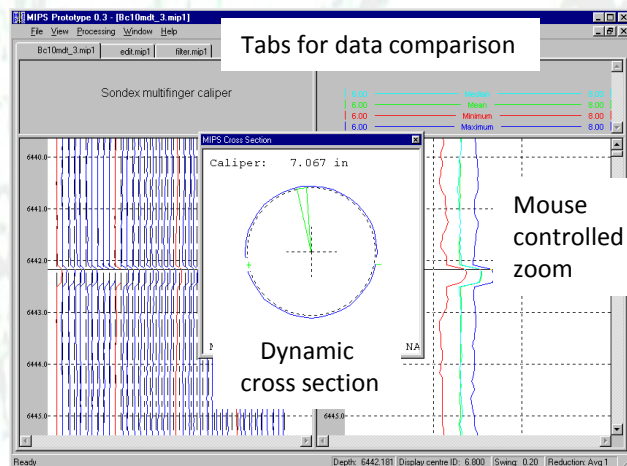
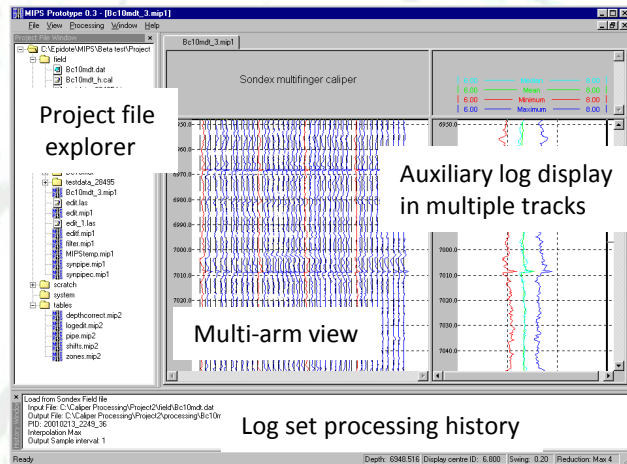
Platform

MIPSPro 2.1 runs on a PC platform under Windows XP, Windows Vista or Windows 7. Some modules use the .NET framework.

Graphics are written to leverage OpenGL compatible graphics cards.

Support

All MIPS packages are fully documented with interactive help. A PDF format copy of the full documentation is supplied. Product support provided via email and ftp. Training and consultancy is also available.



MIPSPro 2.1 - Technical specifications

Data Import

- Sondex, Probe and GoWell calipers
- Native SRO and MDT field data
- Warrior database curves *
- LAS 2.0 ASCII files
- Customized formats

Data Processing

- Raw log editing
- Multi-arm filtering
- Re-sample in depth
- Shift, stretch & squeeze depth correction
- Merge of runs and additional logs
- Least squares centralization
- Data derived re-calibration
- Histogram re-calibration
- Multi-arm statistics
- Azimuth driven orientation to upside
- Conversion to TVD
- Thickness and Time-lapse utilities

Data Export

- LAS 2.0 ASCII files
- MIPS Binary format
- Customized formats

* Optional plugin

Pipe Analysis

- Automatic pipe end detection & interactive edit
- Pipe-by-pipe penetration analysis

Reporting

- Flexible reporting of text, graphs, tables, bookmarked curve displays & cross sections, imported images.
- Output in pdf or tiff format

Interactive display (included in MIPSView)

- Intelligent reduction of data for display
- Configurable display of curves with various line types, colour, weighting and shading
- Tabbed multi-window displays
- Dynamic cross section displays
- Display of additional imported curves (e.g. GR, CCL, Temp)
- Processing history display
- Synchronisation with MIPS3D
- Co-rendering of thickness / time-lapse logs
- Overlay of user defined text annotation layers

Graphical Export

- JPEG & BMP
- AVI movies (MIPS3D)
- API style plotting via .pdf files

MIPS3D

MIPS3D allows the engineer to view the inside surface of the pipe, either from the outside or in 'fly-down' mode.

3D animation and depth scrolling can be recorded as AVI format movies.

There are several different surface rendering and data reduction options.

The view can be synchronized with the display in MIPSPro or MIPSView.

