

# Multifinger Imager Processing System

## MIPSReport 2.1

### MIPS Reporting

The MIPSReport module is bundled with MIPSPro releases. It will design and assemble the various sections of a multifinger caliper interpretation report and export the complete document as a PDF or TIFF format file.

### Report features

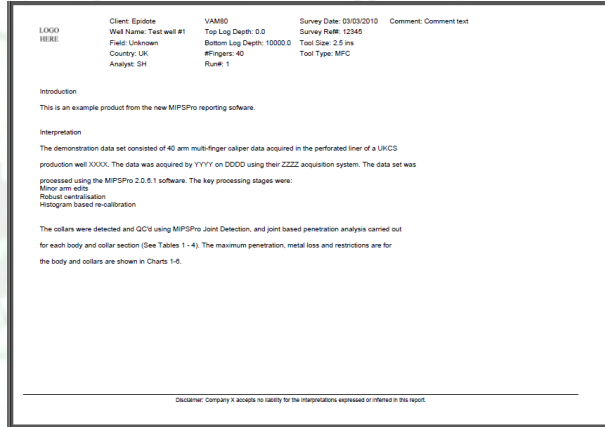
The following section types can be defined and their order re-arranged as required:

- Text containing the introduction, analysis and interpretation. Supports 'rich text'.
- Graphical representations and Histograms of joint based penetration or thickness data
- Grids (tables) of joint based penetration or thickness data
- Displays of selected intervals of log curves
- Selected cross sections of pipe
- Images captured from MIPSPro or from scanned data
- Concluding text

The user can build up and re-use the report definition at any stage during data processing and interpretation.

MIPSReport provides an interface to carry out 'Joint Analysis' of pipe or collar sections of the pipe based on the processed caliper data and MIPSPro table of pipe end depths.

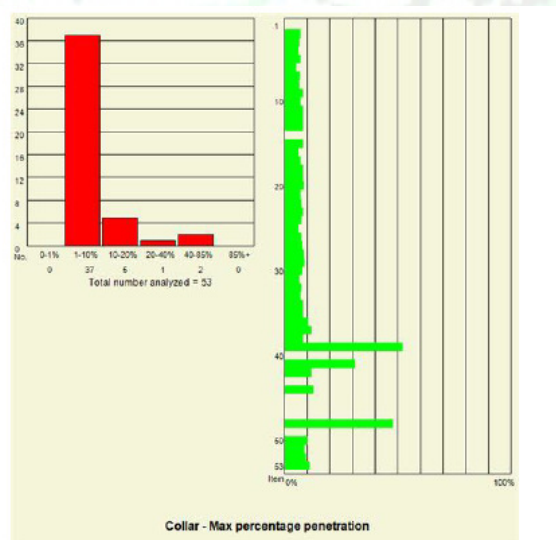
Using the MIPSPro viewer the user can 'bookmark' cross sections and log displays relevant to the interpretation and capture images for the report.



A MIPSReport text page with header, logo and footer

Item#	Bottom Body	Top Body	Max Pen %	Max Loss %	Min Res %
1	13220.000	13187.833	9.667	6.621	18.500
2	13187.542	13154.262	-9.000	-10.392	19.000
3	13153.875	13111.063	-9.917	-11.465	19.000
4	13110.208	13080.125	20.500	-10.424	21.833
5	13080.000	13049.813	21.083	7.193	22.917
6	13049.688	13018.938	23.000	7.167	20.833
7	13018.813	12988.771	34.250	8.019	20.917
8	12988.648	12958.479	30.500	7.266	21.750
9	12958.354	12928.229	26.750	-10.107	23.167
10	12928.063	12897.979	23.583	6.287	21.833
11	12897.854	12867.625	22.417	7.343	22.917
12	12867.500	12837.375	55.106	25.619	22.000
13	12837.229	12807.146	47.689	23.650	20.925
14	12807.021	12776.896	82.725	28.158	16.423
15	12776.750	12742.875	62.530	12.231	20.560
16	12742.583	12711.750	3.406	-0.809	11.314
17	12711.479	12672.979	31.022	27.405	11.438
18	12672.604	12635.083	31.022	27.247	12.530

A MIPSReport customised table with bar chart columns



A MIPSReport histogram and bar chart graphic

# MIPSReport 2.1.0 - Technical specifications

## Access & data import

- Bundled with MIPSPro 2.1 onwards
- Joint analysis of MIPS processed caliper data
- Import of MIPSPro log and cross section bookmarks
- Display of scanned images (e.g. well schematics)

## Report format

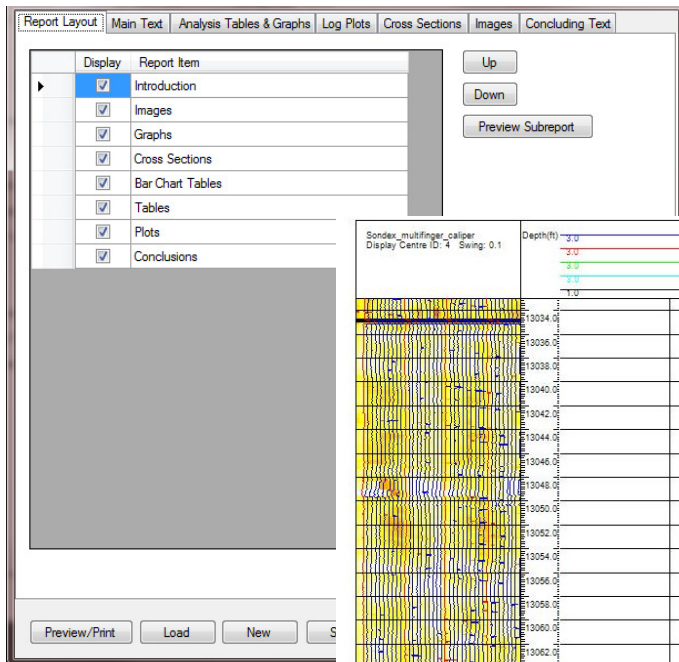
- Introduction and concluding 'rich text' sections
- Reads project database, logo images and disclaimer text
- Flexible ordering of report sections
- Optional text annotation of all tables & images

## Report Export

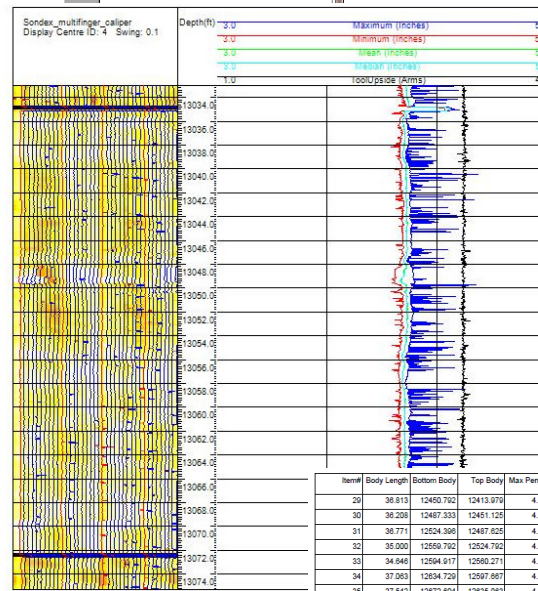
- Pre-view of full report or sub-report sections
- A4 Landscape .pdf or .tiff format

## Pipe Analysis

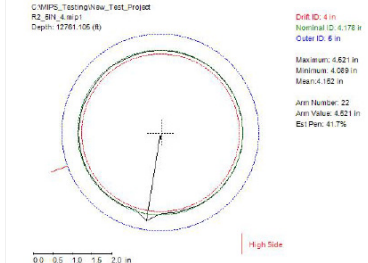
- Reads MIPSPro Joint end tables
- Pipe-by-pipe penetration analysis, separate body & collar reports
- Supports thickness data reporting
- Post analysis joint selection and comment text
- Optional 'global' analysis of largest penetrations
- Support for up to 10 separate tables
- Flexible selection of reported data columns
- In-table bar charts of %age type data
- Separate bar chart and histogram graphs
- Optional output of analysis tables in MS Excel \*.csv format



MIPSReport UI showing Report Layout tab



Log displays and cross sections imported from MIPSPro bookmarks



This display shows the multi-arm caliper data over the perforated liner

MIPSReport Table – flexible column selection from joint analysis output

Item#	Body Length	Bottom Body	Top Body	Max Pen In	Max Pen %	Max Pen %	Max Loss Depth	Max Loss %	Max Pen Depth	Mean Loss %	Comments
29	36.813	12450.792	12413.079	4.187	1.095	12434.250	-0.148	-2.503	12434.167	-5.186	
30	39.239	12487.333	12451.123	4.194	1.049	12477.750	-0.109	-1.833	12477.771	-4.268	
31	38.771	12524.399	12487.623	4.162	1.163	12516.250	-0.102	-1.715	12509.593	-3.898	
32	35.000	12559.792	12524.792	4.188	1.217	12549.333	-0.147	-2.476	12540.417	-5.165	
33	34.944	12594.917	12560.271	4.184	0.730	12577.854	-0.161	-2.713	12577.792	-5.250	
34	37.063	12634.729	12597.667	4.177	-0.122	12612.250	-0.156	-2.838	12612.000	-5.013	
35	37.542	12672.604	12636.063	4.433	31.022	12668.792	1.614	27.247	12668.913	-5.116	
36	38.500	12711.479	12672.979	4.433	31.022	12711.004	1.424	27.408	12711.083	-3.103	
37	30.833	12742.583	12711.750	4.206	3.406	12733.271	-0.048	-0.806	12733.144	-4.476	
38	33.875	12776.750	12742.875	4.692	62.530	12776.750	0.725	12.231	12774.958	-3.548	
39	30.125	12807.021	12776.896	4.858	62.725	12778.188	1.668	28.158	12778.188	-2.213	
40	30.083	12837.229	12807.149	4.570	47.689	12816.063	1.401	23.650	12813.354	-4.721	
41	30.125	12867.500	12837.375	4.631	55.106	12860.208	1.518	25.619	12856.271	-5.172	
42	30.229	12897.854	12867.622	4.569	22.417	12887.208	0.678	7.343	12882.750	-10.797	
43	30.104	12928.083	12897.979	4.583	23.583	12924.000	0.581	6.287	12926.521	-12.812	
44	30.125	12958.354	12928.229	4.621	26.750	12954.917	-0.934	-10.107	12940.958	-11.648	
45	30.187	12988.649	12958.479	4.696	30.500	12980.917	0.671	7.266	12987.083	-10.215	
46	30.042	13018.813	12988.771	4.711	34.250	12997.333	0.741	8.019	12997.333	-11.025	
47	30.750	13049.688	13018.938	4.576	23.000	13035.021	0.662	7.167	13040.458	-11.241	
48	30.188	13080.000	13049.813	4.553	21.963	13070.500	0.864	7.163	13075.271	-11.751	
49	30.083	13110.208	13080.129	4.548	20.500	13091.750	-0.963	-10.424	13084.250	-12.900	
50	42.813	13153.875	13111.063	4.181	-0.917	13134.375	-1.059	-11.465	13117.188	-12.361	
51	33.250	13187.542	13154.292	4.192	-0.000	13170.500	-0.950	-10.392	13170.750	-12.072	